

CABLE 189 RF: RF CABLE ASSEMBLY, I-PEX MHF PLUG + SMB BULKHEAD JACK + MULTIPLE CABLE SIZES

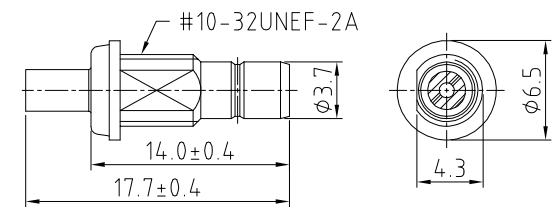
SPECIFICATIONS:

1. I-PEX MHF PLUG, P/N:
FOR $\phi 1.13\text{MM}$ CABLE: 20278-112R-13.
FOR RG178 CABLE: 20278-112R-18.
2. COAXIAL CABLE, SEE P/N FOR DETAIL.
3. SMB BULKHEAD JACK, GOLD, P/N:
FOR $\phi 1.13\text{MM}$ CABLE: RFCT-SMB003-F13.
FOR RG178 CABLE: RFCT-SMB002-F78.

USAGE PRECAUTIONS: CABLES USING 'MICRO' COAX ARE DELICATE:
(i) HANDLE WITH CARE.
(ii) DO NOT TWIST; APPLY EXCESSIVE FORCES OR SHARP BENDS TO THE CABLE. DO NOT FORCEFULLY DEFORM WIRES.
(iii) CONSULT CONNECTOR MANUFACTURER'S DATASHEETS FOR DETAILED NOTES ON HANDLING INSTRUCTIONS.

NOTES:

1. THE ORIENTATION OF CONNECTORS ON DRAWING IS FOR REFERENCE ONLY, IF THE ORDER IS LEFT BLANK THE CONNECTOR WILL NOT HAVE FIXED ORIENTATION.
2. FIXED ORIENTATION IS SUGGESTED FOR CABLE LENGTH 25MM TO 100MM. PLEASE SPECIFY THE FIXED ORIENTATIONS FROM THE ORDER CODE (F1, F2, ETC)
3. CONTACT GRAD CONN IF THE ORIENTATION YOU REQUIRE IS NOT SHOWN.
4. WORKING FREQUENCY RANGE: DC-3GHz
5. OPERATING TEMPERATURE: -40°C TO $+80^{\circ}\text{C}$
6. IMPEDANCE: 50 OHM



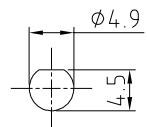
HOW TO ORDER
CABLE 189 RF - X X X - X X - X - X

"L" LENGTH IN MM
eg: 100MM = 100
(MIN. 025-MAX.400
STANDARD = 100, 150, 200)
Tolerance: <50mm : $\pm 2\text{mm}$.
51-200mm: $\pm 5\text{mm}$.
201-400mm: $\pm 7\text{mm}$.

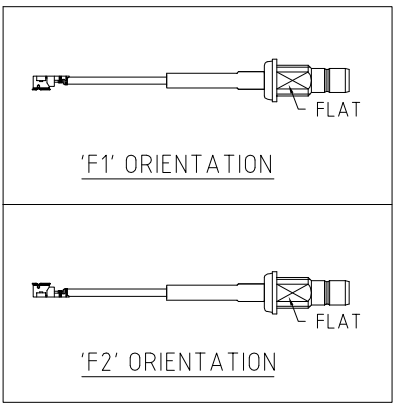
CABLE SIZE OPTIONS:
1 = $\phi 1.13\text{MM}$ CABLE, COLOR: GRAY
2 = RG178 CABLE, COLOR: BROWN

WASHER AND NUT OPTIONS:
BLANK = SEPARATELY PACKED (STANDARD)
A = ALL ASSEMBLED WITH CONNECTOR

ORIENTATION OPTIONS:
BLANK = DOES NOT HAVE A FIXED ORIENTATION
F1 = MHF CONNECTION DOWN (L=25-220MM)
F2 = MHF CONNECTION UP (L=25-220MM)
(SEE NOTES 1, 2, 3 AND DIAGRAMS FOR MORE INFORMATION)



RECOMMENDED SMB MOUNTING HOLE



REV. DATE & DRN
10 25/11/16 - NYW RELEASE
11 16/08/19 - NYW FOR 113 CABLE
ADD CABLE OPTION 2

Scale: NTS	THIRD ANGLE	Unstated .X .XX .XXX ANGLES	Tolerances: N/A N/A N/A N/A	Material SEE NOTE
Drawn: NYW				
App'd: XXX	Title: CABLE ASSEMBLY			NOT TO SCALE
Date: 16 AUG. '19	Revision: 1.1			Unit: mm

THIS DRAWING IS CONFIDENTIAL AND MUST NOT BE COPIED OR DISCLOSED WITHOUT WRITTEN CONSENT

Type: Cable 189 RF
CABLE 189 RF
Drawing Number:
Sheet 1 of 1
Drawing © E and O E